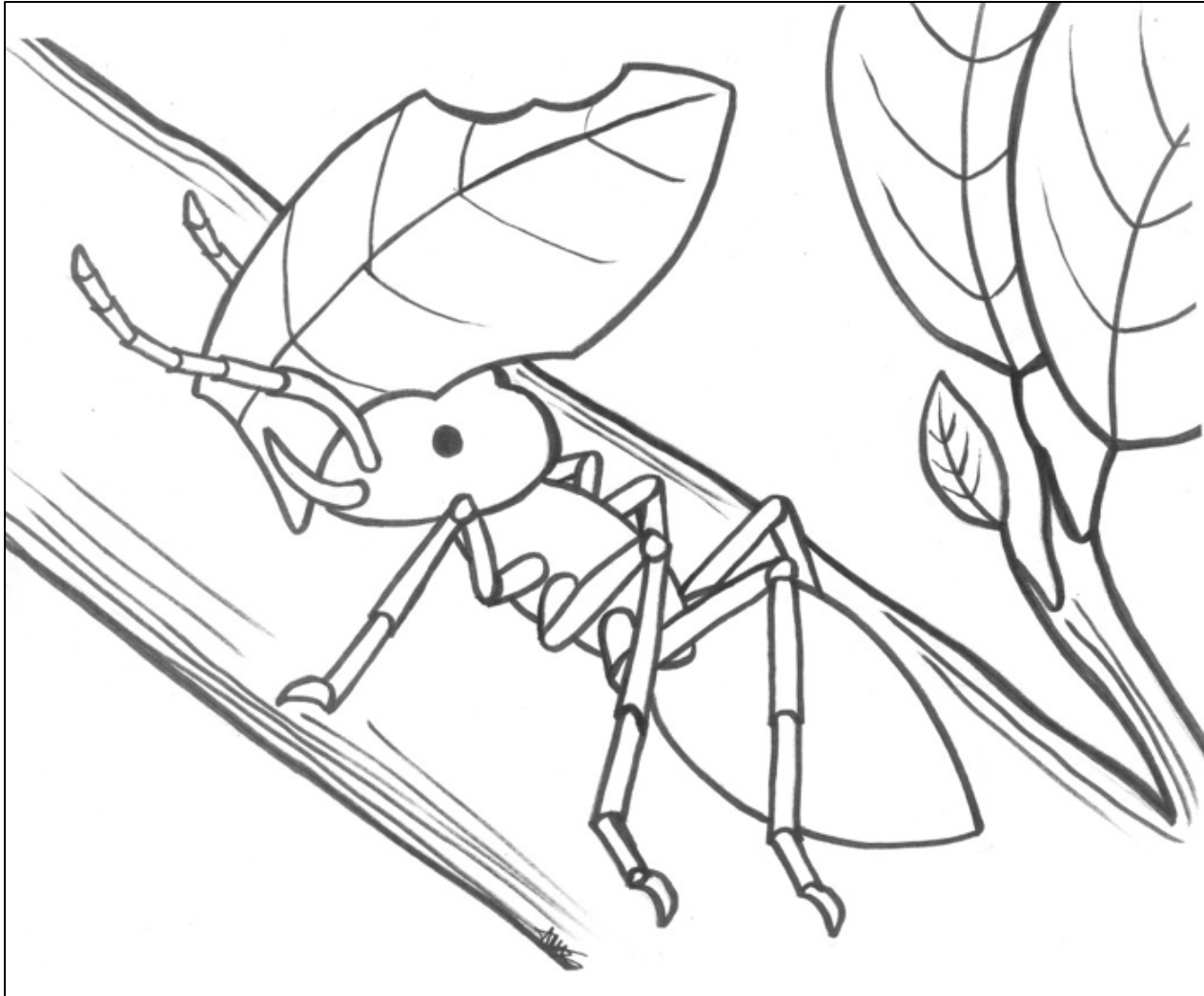


## Leafcutter Ant (*Atta spp.* and *Acromyrmex spp.*)



Leafcutter ants practice advanced methods of sustainable agriculture and operate under one of the most studied social caste systems in the natural world. Found principally in Latin America and the Caribbean, leafcutter ants inhabit the forest floor and construct an underground web of chambers where they "farm" and harvest their staple food, fungus. Protect the habitat of the leafcutter ant, visit <http://www.rainforest-alliance.org/programs/aar>.