

CAPABILITIES STATEMENT

INTEGRATED LANDSCAPE MANAGEMENT

An approach to improving social, environmental, and economic well-being at the landscape level

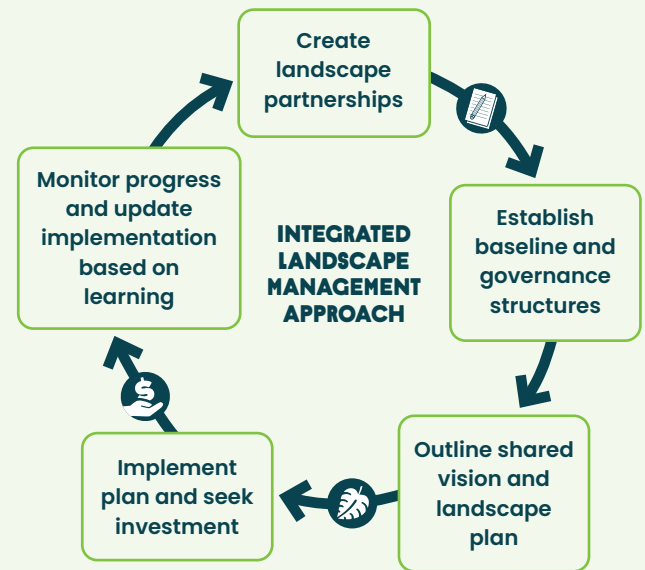


When implemented at the landscape scale, regenerative agriculture and nature-based solutions hold great potential for change in communities experiencing high rates of deforestation and biodiversity loss, strained water availability, and low production quality. These challenges often result from a convergence of factors operating on a wider scale than a single sector or supply chain.

Grounded in the belief that long-term conservation of forests, water systems, and biodiversity cannot be decoupled from the surrounding rural economy, the Rainforest Alliance's Integrated Landscape Management (ILM) approach mobilizes diverse stakeholders—producers and rural communities, businesses, and governments—to identify and invest in solutions to the complex and interconnected challenges affecting everyone in the landscape.

The Rainforest Alliance's ILM approach integrates:

- Participatory land use planning and governance
- Nature-based enterprise development
- Resource mobilization for sustainable landscape activities



Rainforest Alliance-established landscape partnerships organize public and private actors to improve forest management, land use, and sustainable business and finance models in 11 countries.

Key impacts from 2025 include:

9.1 MILLION

hectares of ecologically important regions under improved land use planning.

30+

established landscape partnerships implementing the ILM approach globally.

US\$8.9 MILLION

in public and private financing mobilized by landscape partnerships for sustainable landscape activities.

440+

stakeholders participate in landscape partnerships through activities and contributed resources.

Participatory land use planning and governance

The ILM approach establishes landscape partnerships, sometimes known as Landscape Management Boards (LMBs) or Landscape Committees. Landscape partnerships are multi-stakeholder, gender-inclusive governance bodies that develop and implement landscape action plans outlining sustainable land use and conservation strategies. They lead landscape governance processes, often establishing elected boards and benefits-sharing mechanisms to promote transparency and inclusivity in decision-making and resource use. To govern effectively, landscape partnerships apply landscape performance data, gathered through situational analyses and tools such as the [LandScale Assessment Framework](#). This work is integrated into local policy frameworks, which landscape partnerships interpret, influence, and apply on behalf of all landscape stakeholders.

Enhancing local economies through nature-based enterprise development

Sustainable enterprise development is central to the ILM approach. The Rainforest Alliance supports farmers and forest communities in diversifying incomes, adopting sustainable practices, and strengthening their sustainable business and financial planning. Scaled through landscape partnerships, we provide training and technical assistance in forest conservation, regenerative and climate-smart agriculture, and landscape restoration. This work is grounded in a market-based approach that helps communities better value their natural resources and increase access to markets for diverse, sustainably produced products.

Translating locally determined priorities into investable opportunities

Through ILM, the Rainforest Alliance works with stakeholders to fund priority activities identified in landscape action plans. To do this, we implement detailed analyses of locally defined financing needs, appropriate financial instruments, investment insights, and barriers to accessing capital. We engage with impact investors, commercial banks, savings and credit cooperatives, sourcing companies, and multilateral funds to align available capital with landscape priorities and the realities of community enterprises. At the same time, we provide investment readiness training for nature-based enterprises, cooperatives, and local institutions, increasing their ability to access and manage financing.



In the Peruvian Amazon, 30 public and private stakeholders created a landscape action plan covering 500,000 hectares surrounding Peru's Cordillera Escalera. The plan includes mobilizing finance and investment to protect the Cordillera Escalera, such as by increasing resources for Indigenous associations. Under the plan, we provided technical assistance to expand access to finance and scale the sustainable production activities of local organizations, resulting in:

- Co-design of a green credit product and mobilization of **US\$1,500,000** to Norandino Cooperative for its implementation.
- **US\$1,000,000** in public funding invested in Indigenous organizations for their sustainable production activities.
- Defined a landscape-specific capacity building strategy, with five **training modules**, including financial literacy, organizational strengthening, and investment readiness.

OUR PROGRAMS: ILM IN PRACTICE

Community-based landscape management CAMEROON

In Cameroon, the Rainforest Alliance has strengthened land management and governance by working with LMBs and municipal governments to embed local and Indigenous land management and economic models into wider territorial planning, ensuring communities have the legal and institutional support for their implementation over the long term. This includes targeted support—such as small grants, training, and market linkages—to women-owned enterprises that diversify household production, incorporating activities such as beekeeping and value-added cassava chips. These sustainable businesses have demonstrated increases in household income between 20 and 35 percent, reinforcing both conservation and economic outcomes.

Resilient Ecosystems and Sustainable Transformation of Rural Economies

CÔTE D'IVOIRE AND GHANA

This public-private partnership produced a scalable ILM model for community-led land use planning, restoration, and economic development in cocoa-forest landscapes. The program established four new LMBs in Côte d'Ivoire who mobilized US\$1,200,000 for sustainable landscape activities through 208 Village Savings and Loan Associations. The program also trained 7,300 farmers in regenerative and climate-smart agriculture, distributed 300,000 shade trees for agroforestry systems, and trained 360 women entrepreneurs to establish eco-enterprises such as beekeeping, aquaculture, and cassava processing.

Sustainable Landscape and Livelihoods Program KENYA

With funding from the IKEA Foundation and in partnership with the Kenya Tea Development Agency and public, private, and community actors, the Rainforest Alliance brought together stakeholders in Mount Kenya to protect critical water sources and strengthen inclusive landscape management across high priority sectors, such as coffee and tea. Through ILM, the program has reached 55,000 farmers and community members. By the end of 2025, they had planted 220,400 native trees and restored 42 kilometers of riparian areas. The program also created 531 new jobs and supported 45 nature-based enterprises in expanding market access and improving profits year-on-year.

Governance, environment, and sustainable production INDONESIA

In Sintang West Kalimantan, the Rainforest Alliance has helped stakeholders bring 2.2 million hectares under sustainable management, benefiting more than 438,000 people. By convening 60 partners across government, companies, farmers, and civil society, the landscape action plan establishes a roadmap for improving agricultural traceability and increasing smallholder capacity for sustainable production. The initiative has engaged 837 smallholders, incorporated 27,000 hectares of ecosystems into landscape planning, and supported participating companies in actively monitoring 7,800 hectares of high conservation value areas.